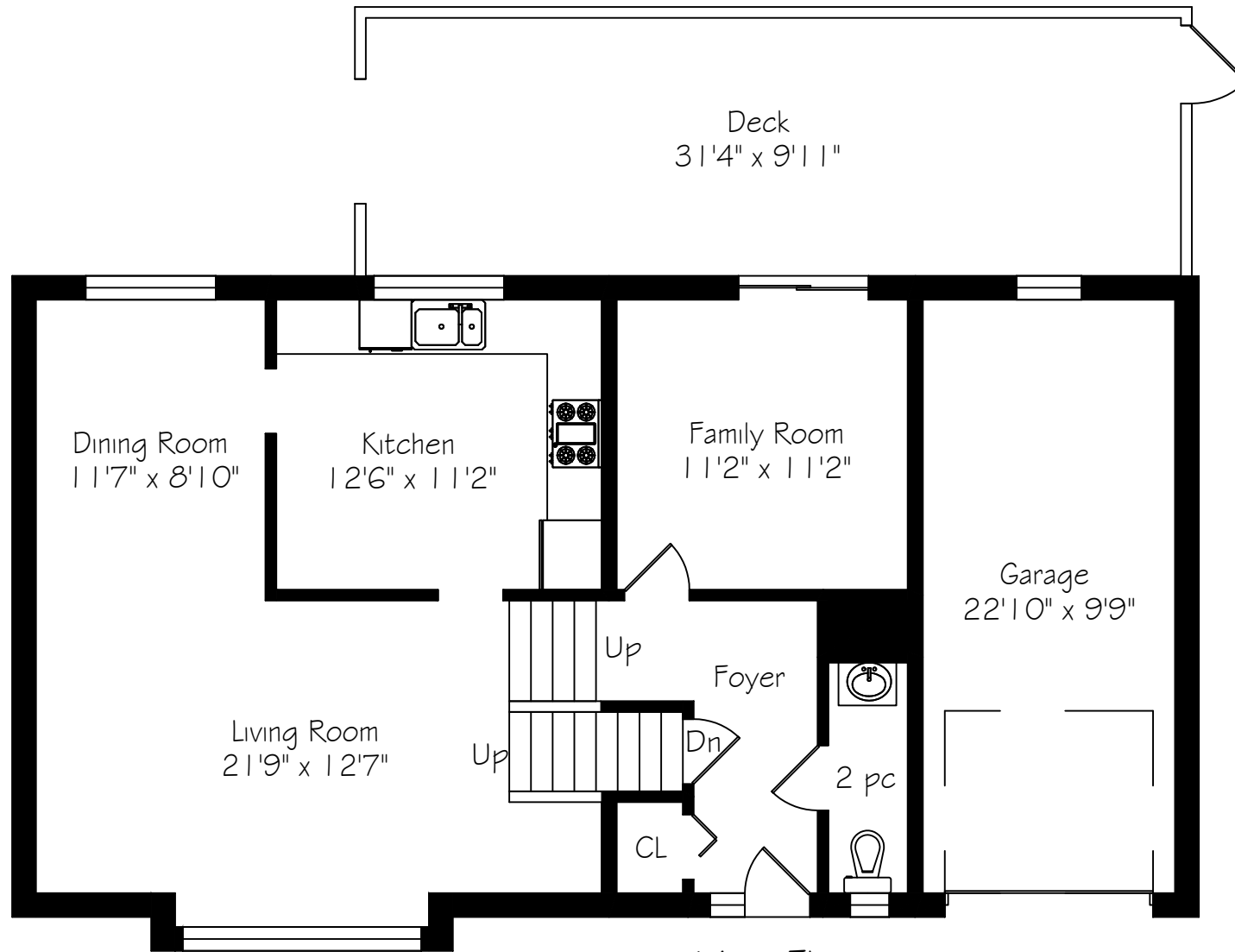


557 Trafford Crescent



Deck
31'4" x 9'11"

Dining Room
11'7" x 8'10"

Kitchen
12'6" x 11'2"

Family Room
11'2" x 11'2"

Garage
22'10" x 9'9"

Living Room
21'9" x 12'7"

Up
Up

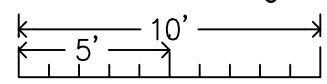
Foyer

Dn

2 pc

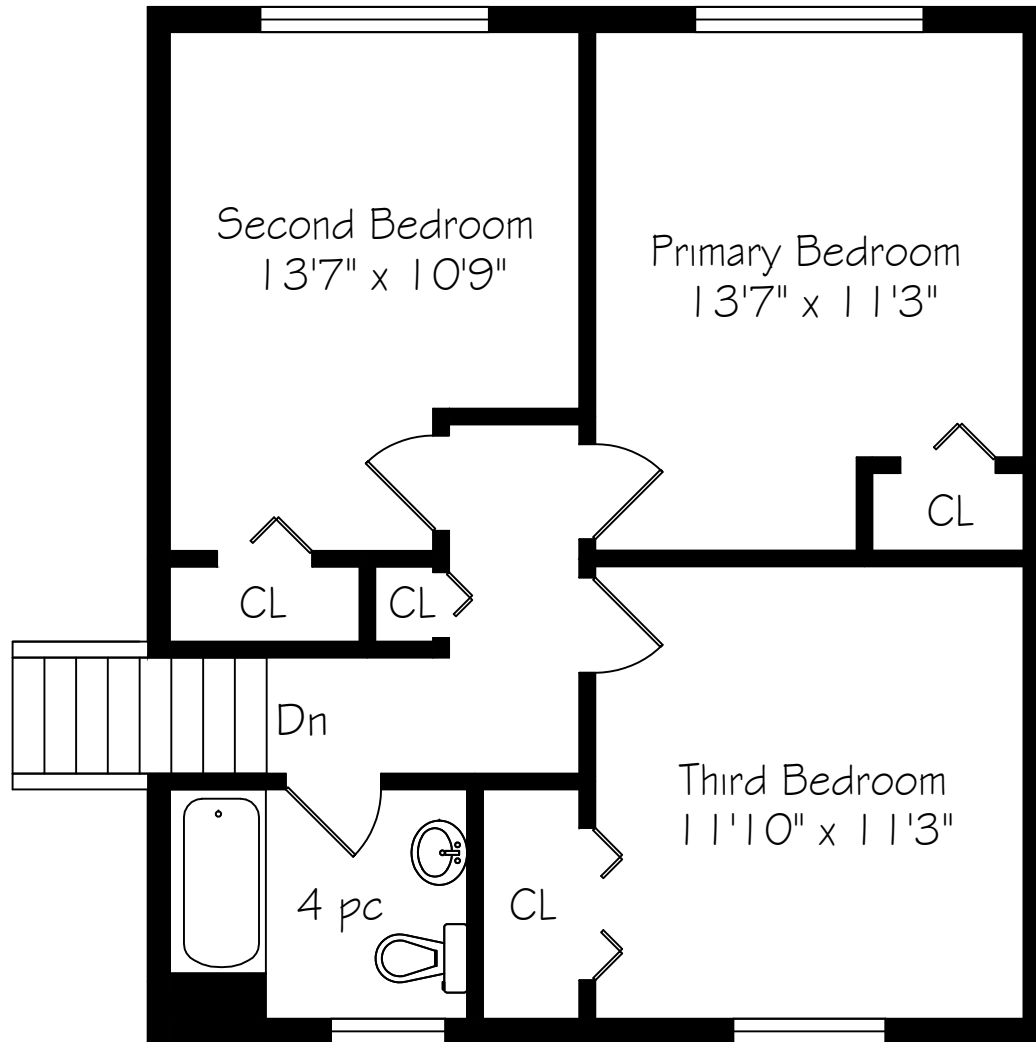
CL

Main Floor
876 Square Feet
+ 261 Garage

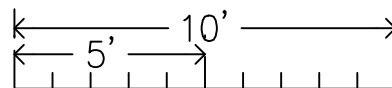


Measurements and Calculations are approximate
To be used as guidelines only
www.measuredup.ca

557 Trafford Crescent

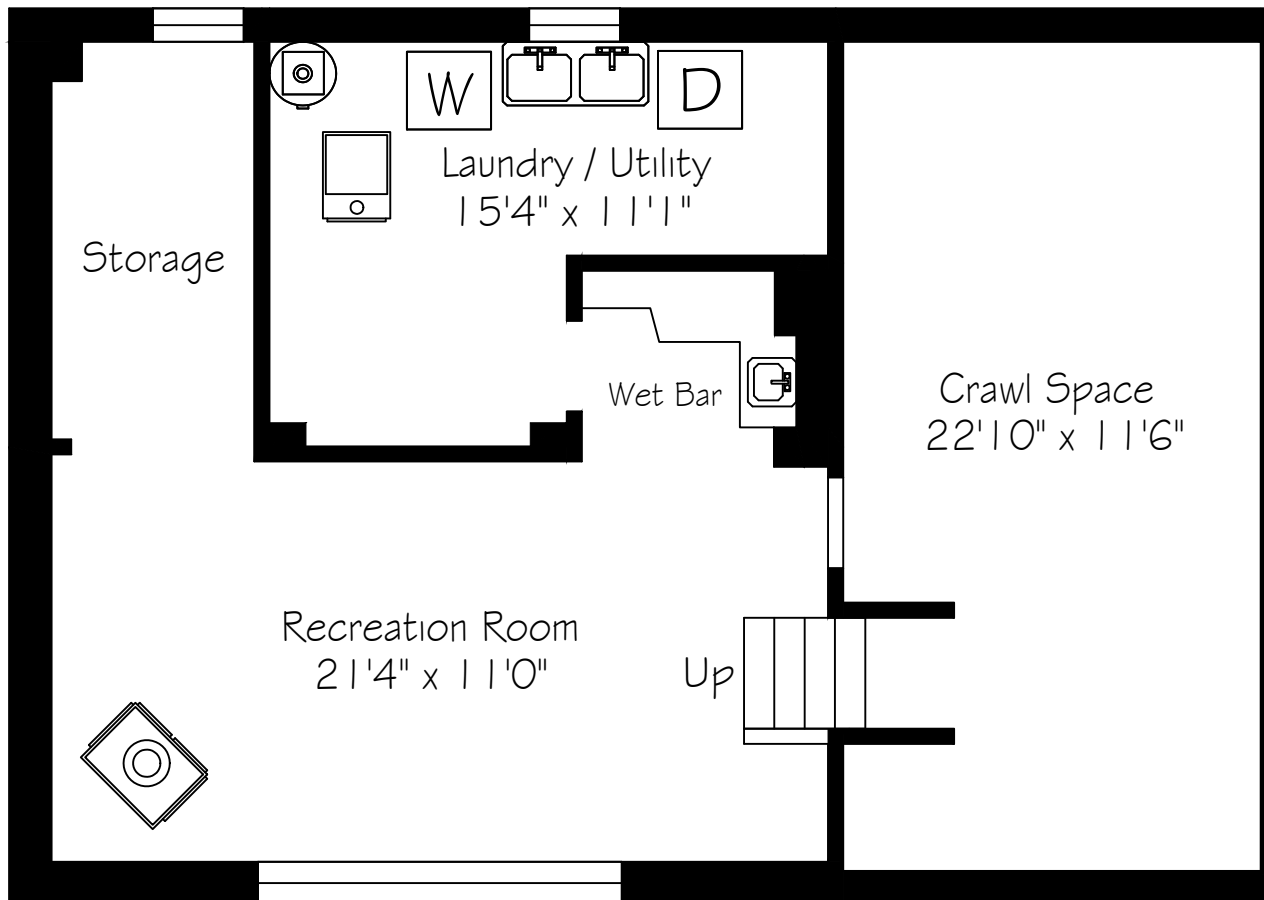


Second Floor
657 Square Feet

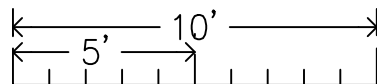


Measurements and Calculations are approximate
To be used as guidelines only
www.measuredup.ca

557 Trafford Crescent



Lower Level
861 Square Feet



Measurements and Calculations are approximate
To be used as guidelines only
www.measuredup.ca